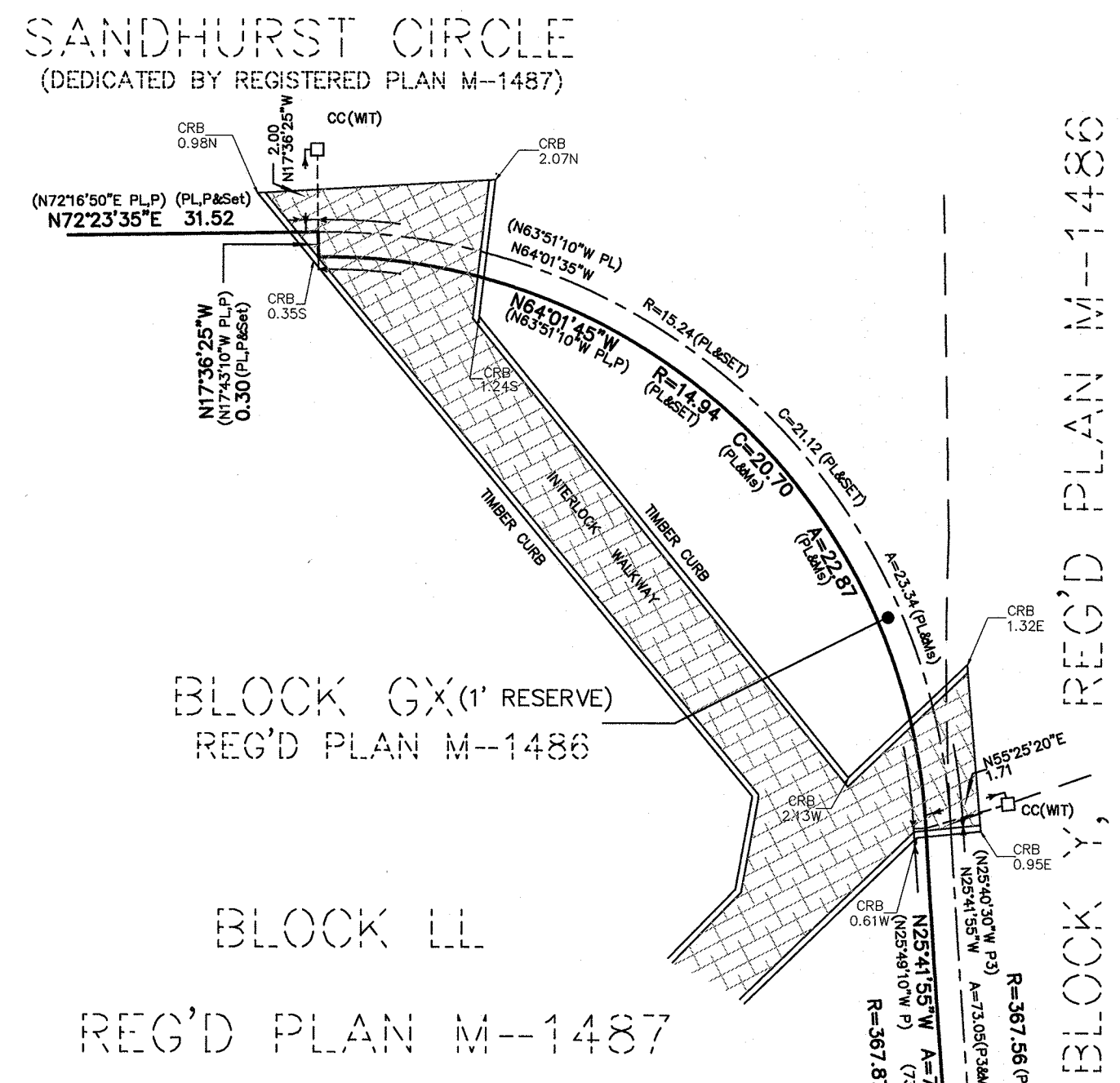
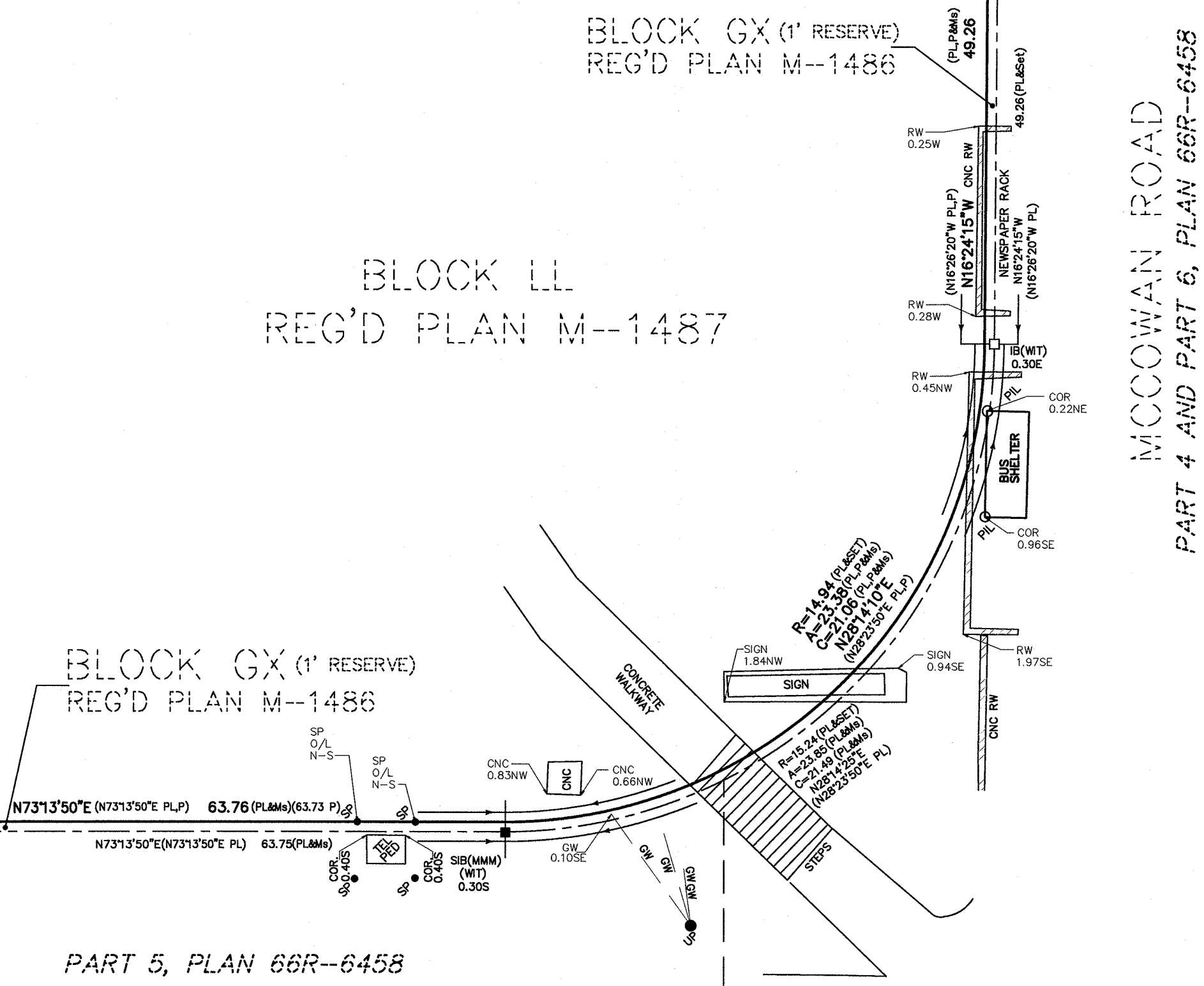


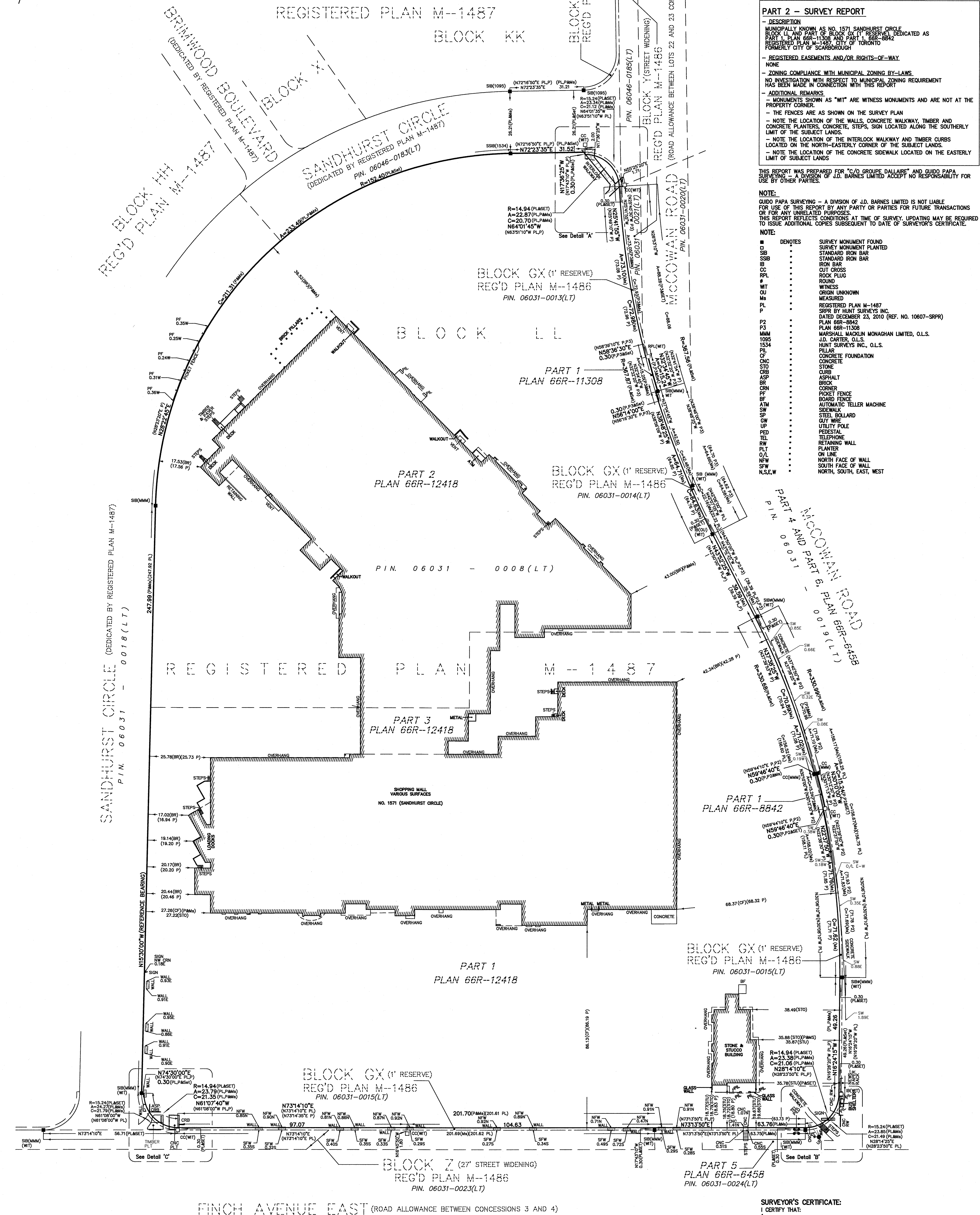
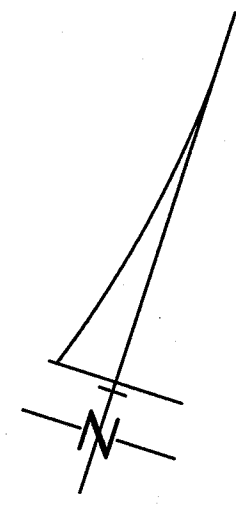
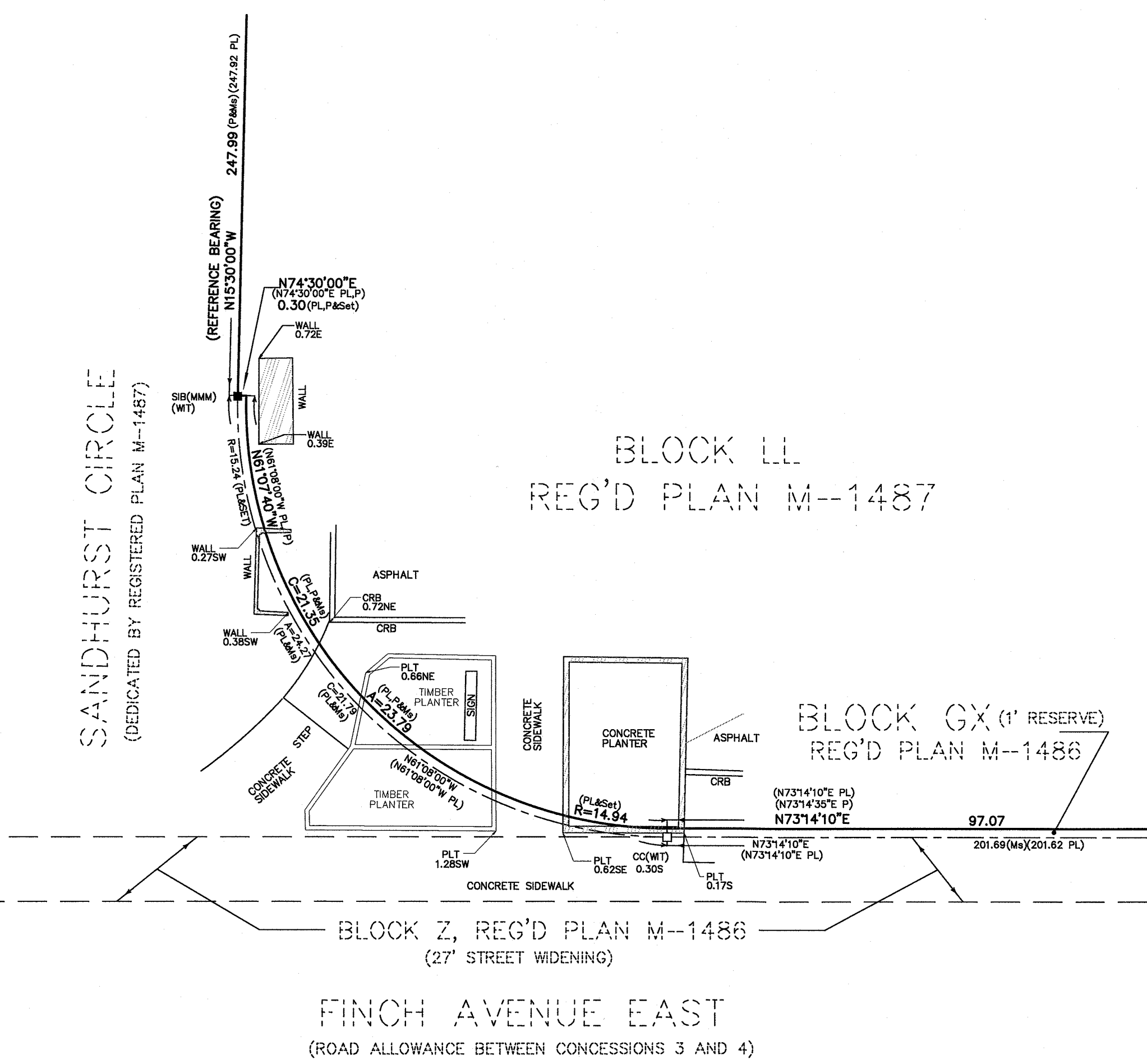
DETAIL 'A' (Not To Scale)



DETAIL 'B' (Not To Scale)



DETAIL 'C' (Not To Scale)



SURVEYOR'S REAL PROPERTY REPORT
 PART 1
 PLAN OF
 BLOCK LL
 AND
 PART OF BLOCK GX (1' RESERVE)
 REGISTERED PLAN M-1487
 CITY OF TORONTO
 FORMERLY CITY OF SCARBOROUGH

SCALE = 1:750m
 METRIC: DISTANCES AND COORDINATES SHOWN HEREON ARE IN METRES AND CAN BE CONVERTED TO FEET BY DIVIDING BY 0.3048.

PART 2 - SURVEY REPORT
 - DESCRIPTION
 - INVESTIGATION WITH RESPECT TO MUNICIPAL ZONING REQUIREMENT
 - REGISTERED EASEMENTS AND/OR RIGHTS-OF-WAY
 - ZONING COMPLIANCE WITH MUNICIPAL ZONING BY-LAWS
 - ADDITIONAL REMARKS
 - MONUMENTS SHOWN AS "WT" ARE WITNESS MONUMENTS AND ARE NOT AT THE PROPERTY CORNER
 - THE FENCES ARE AS SHOWN ON THE SURVEY PLAN
 - NOTE THE LOCATION OF THE WALLS, CONCRETE WALKWAY, TIMBER AND CONCRETE PLANTERS, CONCRETE STEPS, SIGN LOCATED ALONG THE SOUTHERLY LIMIT OF THE SUBJECT LANDS
 - NOTE THE LOCATION OF THE INTERLOCK WALKWAY AND TIMBER CURBS LOCATED ON THE NORTH-EASTERLY CORNER OF THE SUBJECT LANDS
 - NOTE THE LOCATION OF THE CONCRETE SIDEWALK LOCATED ON THE EASTERLY LIMIT OF SUBJECT LANDS

THIS REPORT WAS PREPARED FOR "C/O GROUPE DALLAIRE" AND GUIDO PAPA SURVEYING IN CONNECTION WITH THE SURVEY OF J.D. BARNES LIMITED ACCEPT NO RESPONSIBILITY FOR ANY OTHER PARTIES.
 NOTE:
 GUIDO PAPA SURVEYING - A DIVISION OF J.D. BARNES LIMITED IS NOT LIABLE FOR USE OF THIS REPORT BY ANY PARTY OR PARTIES FOR FUTURE TRANSACTIONS OR FOR ANY UNRELATED PURPOSES.
 THIS REPORT REFLECTS CONDITIONS AT TIME OF SURVEY. UPDATING MAY BE REQUIRED TO ISSUE ADDITIONAL COPIES SUBSEQUENT TO DATE OF SURVEYOR'S CERTIFICATE.

NOTE:

SYMBOL	DESCRIPTION	NOTES
■	SURVEY MONUMENT FOUND	
□	SURVEY MONUMENT PLANTED	
○	STANDARD IRON BAR	
●	IRON BAR	
⊕	CUT CROSS	
⊗	ROUND	
⊙	WITNESS	
○	ORIGIN UNKNOWN	
○	MEASURED	
○	REGISTERED PLAN M-1487	
○	SPR BY HUNT SURVEYS INC	
○	DATED DECEMBER 23, 2010 (REF. NO. 10607-SRPR)	
○	PLAN 66R-8842	
○	PLAN 66R-11308	
○	MARSHALL MACLAIN MONAGHAN LIMITED, O.L.S.	
○	J.D. CARTER O.L.S.	
○	HUNT SURVEYS INC, O.L.S.	
○	CONCRETE FOUNDATION	
○	CONCRETE	
○	STONE	
○	CURB	
○	ASPHALT	
○	BRICK	
○	CORNER	
○	PICKET FENCE	
○	BOARD FENCE	
○	AUTOMATIC TELLER MACHINE	
○	STEEL BOLLARD	
○	UTILITY POLE	
○	PRESTAL	
○	TELEPHONE	
○	RETAINING WALL	
○	ON LINE	
○	NORTH FACE OF WALL	
○	SOUTH FACE OF WALL	
○	NORTH, SOUTH, EAST, WEST	

SURVEYOR'S CERTIFICATE:
 I CERTIFY THAT:
 1. THIS SURVEY AND PLAN ARE CORRECT AND IN ACCORDANCE WITH THE SURVEYS ACT AND THE SURVEYORS ACT AND THE REGULATIONS MADE UNDER THEM.
 2. THE SURVEY WAS COMPLETED ON THE 21st DAY OF DECEMBER, 2017.

DATE: JANUARY 8, 2018
 VALERIO G. PAPA
 ONTARIO LAND SURVEYOR
 A Division of J.D. Barnes Limited

ASSOCIATION OF ONTARIO LAND SURVEYORS
 PLAN SUBMISSION FORM
 2027096

THIS PLAN IS NOT VALID UNLESS IT IS APPROVED AND ISSUED BY THE SURVEYOR

GUIDO PAPA SURVEYING
 A Division of J.D. Barnes Limited

216 CHRISLEA RD, WOODBRIDGE, ON L4L 8S5
 T: (905) 264-2727 F: (905) 264-2728 www.jdbarnes.com

DRAWN BY: L.F. CHECKED BY: V.G.P.
 FILE: G.JOB/2017/17-18-931-00 DATED: 08/01/2018